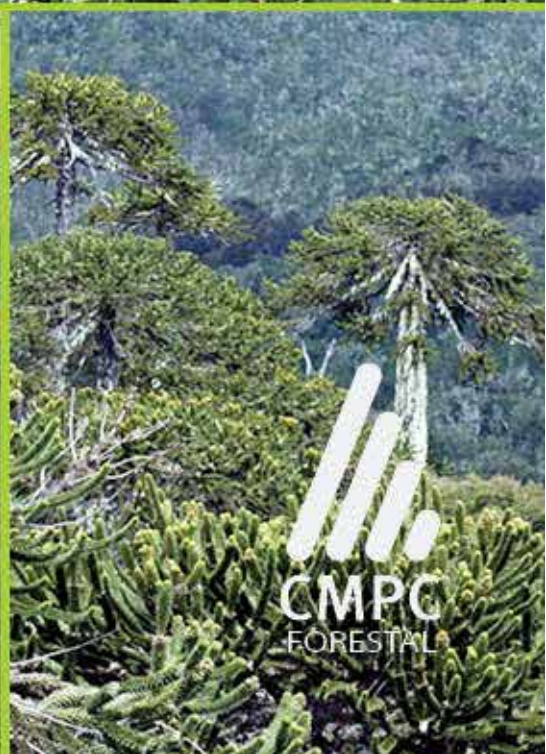


NGP – NEW GENERATION PLANTATIONS
ANNUAL MEETING
SANTIAGO, CHILE
MARCH 16-20, 2015
PLANTATIONS FOR PEOPLE



PRESENTATION

At CMPC, we pursue sustainable development in the long term, through a culture of honest and responsible work, with high standards of safety and care for the environment. We want to create value in our neighboring communities, through enduring ties and supporting initiatives that contribute to improving their quality of life, in the economic, social and cultural areas.



*Francisco Ruiz-Tagle Edwards
CEO, CMPC Forestal*

CMPC FORESTAL

Av. Alemania 751, Los Ángeles, Chile

Phone: (56 - 43) 2636200

gerenciamedioambiente@forestal.cmpc.cl

www.forestalmininco.cl

CMPFC forestral



Santiago

Map of Chile

Forestry Ecosystem Services

Annual carbon capture:
4.5 tons of CO₂
11 Areas of high conservation
value (hcv)
9,753 ha
315 water catchments
for communities

Restoration Commitments

8,738 ha of native
forest in 15 years

FORESTRY ASSETS IN CHILE

TOTAL SURFACE: 737,680 HECTARES (HA)
PRODUCTIVE SURFACE: 578,924 HA
PROTECTION/CONSERVATION
SURFACE: 158,756
CERTIFICATION: FSC AND PEFC

NEIGHBORING COMMUNITIES IN CHILE

570 NEIGHBORHOOD
ASSOCIATIONS
358 NATIVE COMMUNITIES
200,000 INHABITANTS



Forestry assets and communities

SUPPORTING THE MAPUCHE CULTURE

33 CULTURAL INTEREST SITES
NURSERY WITH PLANTS
FOR TRADITIONAL
BASKET WEAVING
PLANTS FOR WOOL DYEING

EMPLOYMENT PROGRAMS FOR OUR NEIGHBORS SUPPORT PROGRAMS FOR SMALL ENTREPRENEURS

ORCHARDS
FOREST PRODUCT HARVESTING
TRAINING COURSES

EDUCATION SUPPORT PROGRAMS

INTERNSHIPS
SCHOOL SCHOLARSHIPS
ORCHARDS IN SCHOOLS

COMMUNITY SUPPORT PROGRAM CMPFC FOUNDATION

SUPPORTS EDUCATIONAL TASKS
AT 570 SCHOOLS
IN 11 MUNICIPALITIES IN
4 REGIONS OF CHILE
129 TEACHERS AND MANAGERS
HAVE RECEIVED ADVISORY
6,858 STUDENTS HAVE BENEFITED
4,972 HOURS OF
TRAINING/ADVISORY

Sustainability

at CMPC Forestal



SOCIETY

We are convinced that the relationship with the people that live in the local community constitutes a vital element for the company's sustainable development.

- STAKEHOLDERS
- COMMUNITY



ECONOMIC DEVELOPMENT

We contribute to the economic, social and cultural development of those sectors in which we develop our production activity.

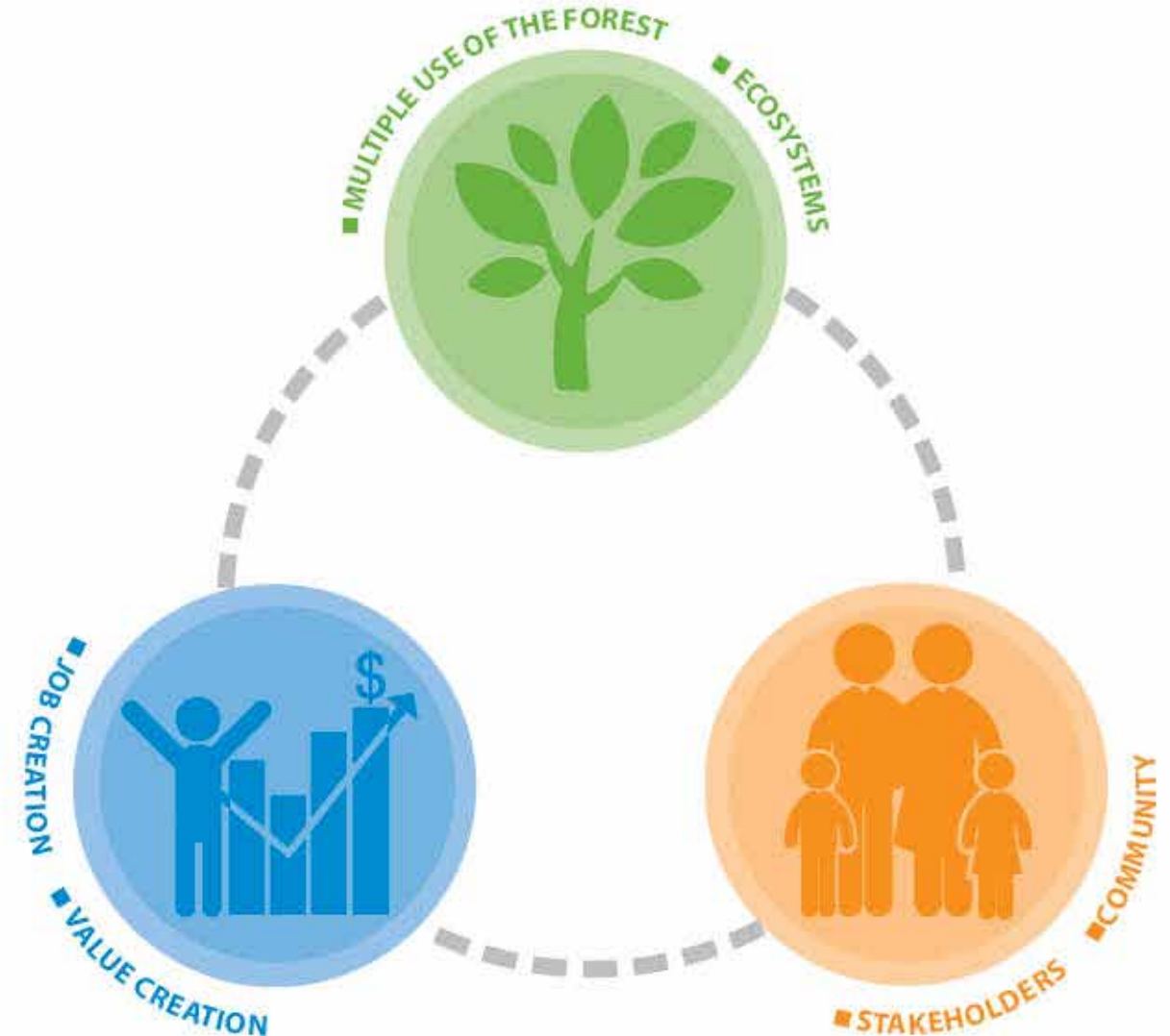
- JOB CREATION
- VALUE CREATION



ENVIRONMENT

It is part of our role to watch out for the areas of High Conservation Value (HCV), ecosystems, biodiversity and forestry services, identifying and protecting those zones and assuring their integrity.

- MULTIPLE USE OF THE FOREST
- ECOSYSTEMS



Society

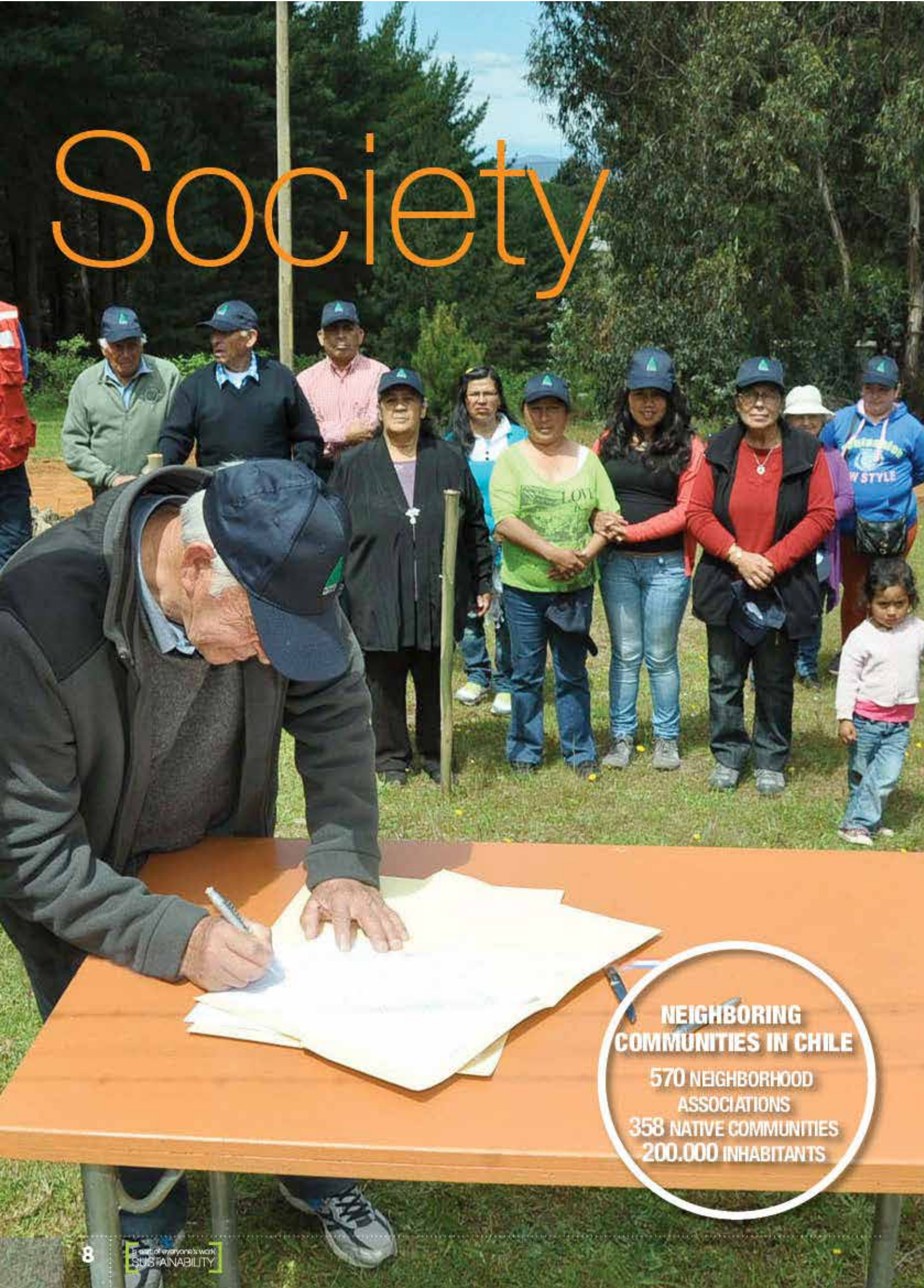


Economic Development



Environment

Society



**NEIGHBORING
COMMUNITIES IN CHILE**

**570 NEIGHBORHOOD
ASSOCIATIONS
358 NATIVE COMMUNITIES
200.000 INHABITANTS**

“Social issues have become an increasingly important concern for NGP participants. We believe that engaging with stakeholders means far more than simply carrying out consultations and obtaining the consent of communities affected by plantations. It's about really getting to know our neighbours, talking and listening to them, and empowering them to meet their needs and achieve their aspirations.”

*Stakeholders involvement.
New Generation Plantation (NGP), 2014 Review.*



SOCIETY
CMPC Forestal

STAKEHOLDERS

We maintain a close and trusting relationship with authorities, representatives and opinion leaders in economic, social and environmental matters related with the forestry sector.

We work in permanent conjunction with authorities, and the company is a participating player, contributing by being economically active, environmentally accountable and socially beneficial.

COMMUNITY

We carry out work that is sustainable in the long-run, in permanent collaboration with our neighbors, instigating the wellbeing of communities that live close to the forests where we develop our production activity. We constantly seek to establish harmonious, transparent and long-term relationships with those communities, and as a company we are a positive player in their development.

This results, among other things, in supporting projects that increase the quality of life of our neighbors in production, education, cultural and infrastructure areas.

PROJECTS IN DEVELOPMENT



Water

15 projects for human consumption
539 families benefited
2.112 direct beneficiaries

52 local solutions for water use and improvement
2.800 direct beneficiaries

315 Areas of High Conservation Value (HCV) that protect watersheds inside the farms 1.777 HA in total



Cultural Identity

Nocha Emulators Project
110 beneficiaries

Plants for wool dyeing Project
232 beneficiaries

33 Areas of High Conservation Value (HCV) of Cultural and Social Interest
257 HA in total



Education

High School Scholarships for students of rural communities
329 beneficiaries

Technical High School Scholarships
41 beneficiaries

Higher Education Scholarships
11 beneficiaries

economic Development



Plantation companies should be profitable businesses. They create jobs, often in poor rural areas. But we can do far more than this. NGP participants are actively looking at ways to support inclusive green growth and share benefits with local communities.

*Economic Development.
New Generation Plantation (NGP). 2014 Review.*



ECONOMIC DEVELOPMENT CMPC Forestal

JOB CREATION

We permanently drive improvements in market management, innovating and developing our products, generating high quality raw materials, always focusing our work in reducing the risks of those who collaborate in our operations and investing in people.

VALUE CREATION

We carry out our production activities with the highest quality, implementing actions that encourage the wellbeing of the people that live close to our forests, helping to improve the economic and social conditions of our environment.

ENTREPRENEURIAL TRAINING COURSES



Training for Entrepreneurship

Chainsaw operation course
20 beneficiaries

Entrepreneurial training courses
34.000 beneficiaries



Employment (Local Labor)

7 service companies
Harvest with local communities:
600 native workers



Production Development

Irrigation water projects
10 projects executed
183 benefited families
732 direct beneficiaries

Orchards
126 benefited families
105 orchards

EMPLOYMENT
PROGRAMS
FOR OUR NEIGHBORS

SUPPORT PROGRAMS FOR
SMALL ENTREPRENEURS

ORCHARDS
FOREST PRODUCT HARVESTING
TRAINING COURSES

Environment

Forestry Ecosystem Services
Annual carbon capture:
4.5 tons of CO₂
11 areas of high
Conservation Value (hcv)
9,753 ha
315 water catchments
for communities

Protecting areas of high conservation value (HCV) – for biodiversity, ecosystem services or cultural and social values – is a condition of FSC certification. The HCV concept is widely recognized – for example by certification schemes for agricultural commodities – which enables NGP to engage with other land users, providing opportunities for conservation initiatives on a significant scale.

Maintaining ecosystem integrity means making sure plantations don't upset natural cycles – for water, nutrients, carbon and biodiversity. Increasingly, NGP participants are looking beyond their own operations toward maintaining and restoring ecosystems on a larger landscape scale. An important future area to explore is how plantations can play a role in building resilience and adaptation to climate change.

*High Conservation Value (HCV) and Ecosystem Integrity.
New Generation Plantation (NGP), 2014 Review.*



ENVIRONMENT CMPC Forestal

MULTIPLES USES OF THE FOREST

We promote the maintenance of the different functions, values and services of the forest. As well as the comprehensive protection of those areas of High Conservation Value (HCV) securing their integrity and improving their value attributes.

ECOSYSTEMS

The biodiversity and ecological cycles of CMPC's forests are identified, protected and conserved in order to secure the essential processes and improve the quality of life for current and future generations. CMPC Forestal adheres to the principles of Sustainable Forest management.

PROJECTS IN DEVELOPMENT



Restoration

8,738 hectares of our heritage in a restoration plan.



Carbon in our plantations

112,6 millones de toneladas de CO₂ acumuladas


18 tons of CO₂ captured per hectare per year



Native Forest

92.000 hectares of native vegetation identified and monitored

11 High Conservation Value (HCV) areas protected for biological reasons
9,753 hectares



*CMPC Forestal undertakes continuous work with its neighbors over time,
encouraging the wellbeing of the surrounding communities,
supporting projects that increase their quality of life.*

CMPC FORESTAL
CASE STUDIES
SUSTAINABILITY

music program

The program called "Música: un puente entre la comunidad y su cultura" (Music: a bridge between the community and their culture) is not selective or exclusive and allows every student to have the possibility to get close to and experience music, either through a musical instrument or singing.

GENERAL OBJECTIVE

To develop social skills and adequate learning environments for students and teachers of rural schools, through the dissemination, practicing music skills and elements of the local, regional and country culture.

The program is an opportunity for both teachers and students to get close to musical expression, considering the isolation and the hard conditions in which rural schools carry out their tasks and in which given their nature there are no specialist teachers.

Each student contributes based on their possibilities, and the main concern is the participation and approach of children and teenagers to musical expression.

This gathering also seeks to develop music skills through singing, playing instruments, reading music and teaching music, using the local regional and country folklore repertoire. Companionship through music encourages the self-esteem of participants.



Map of Chile

Schools Teachers Students



44
schools

53
teachers

1.525
students

68 hectares

33 mapuche communities

105 orchards

126 benefited families

Berries Orchards

As part of the Good Neighborhood actions, CMPC Forestry has promoted a line of work that empowers the entrepreneurship of rural families of the Bio Bio and Araucania Regions.

OBJECTIVE

To stimulate the production and economic improvement of the families of small Mapuche farmers through the development of orchards.

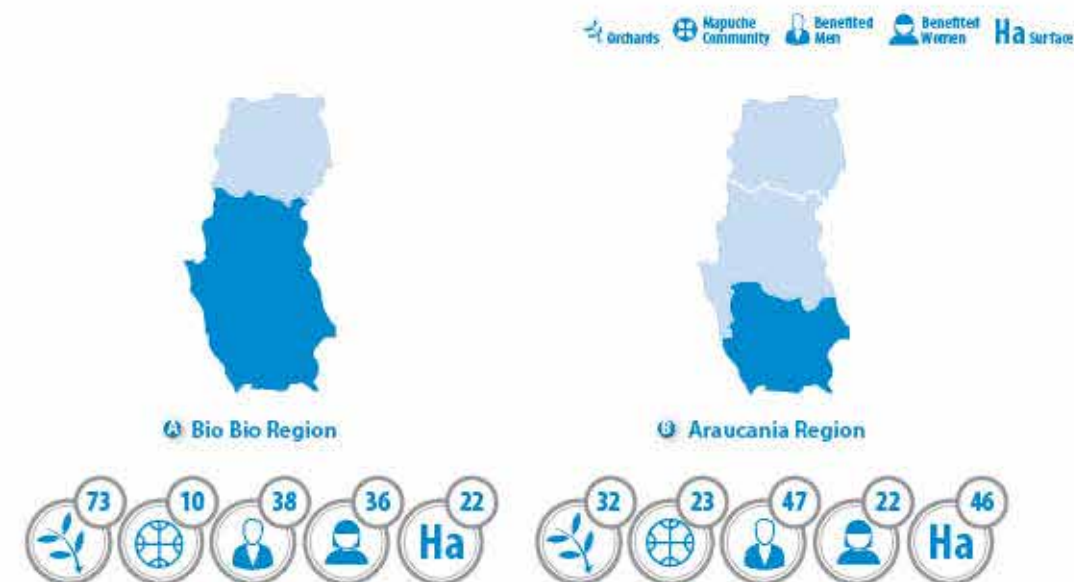
Orchards with small fruits are an alternative for development of production for rural families, because small surfaces of half a hectare or one hectare, can become –if they are properly managed- an important family income. In addition, during the harvesting season orchards are a source of employment and income for the relatives and neighbors that live around them.

Currently, this program is being conducted in the municipalities of Carahue, Tirua, Cañete, Chol Chol and Collipulli, benefiting 126 mapuche small-farm families. This initiative includes agronomic management of the berry orchards through technical advice for productive improvement, initial support related to agricultural supplies, improvement of irrigation systems, training in entrepreneurial skills, and involvement with public and private institutions for the development of fair trade of the production.

In the Araucania Region, Forestal Mininco has signed two collaborative agreements to develop productive fruit orchards, one with "Cooperativa Rehue de Chol Chol" and the other with "Alianza Huapitrio de Collipulli." They will be specialized in growing raspberries and blueberries.



Map of Chile



High Conservation Value Areas (HCV)

with biological attributes

11 HCV with biological attributes

9.753 hectares

Since 2003, CMPC Forestal has formalized programs to identify threatened species and annual monitoring programs that contemplate directed flora and fauna surveys, detection protocols and it has also led cooperation initiatives and wildlife conservation programs among different institutions.

OBJECTIVE

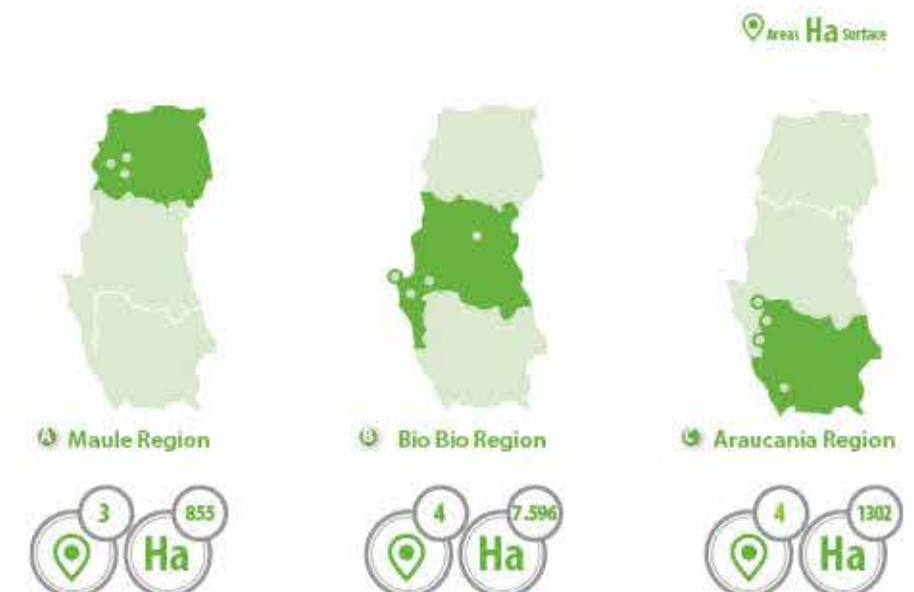
Identify, manage and monitor the Attributes of the Biodiversity's Conservation Value, to avoid their degradation, in order to maintain or increase the value or attributes that require protection.

An area can be defined as High Conservation Value Area (HCV) if it possesses attributes such as the conservation of a species, of an ecosystem or a particular habitat. Since 2005 the company has been working on the concept of High Conservation Value Areas (HCV), biological and other attributes, which are areas that possess relevant characteristics or values.

CMPC forests in Chile are located preferably in the "Bosque Valdiviano" ecological region and cover the Maule Region from the north, to the South Icefields on the south. This zone is known for its ever-green forests, of multiple strata and is one of the regions included in the worldwide biodiversity zones priority list according to World Wildlife Foundation (WWF). Nowadays this ecological region has a high level of ecosystem fragmentation.



Map of Chile



is part of everyone's work
SUSTAINABILITY